

Asband

Duvar Koruma
Sistemleri

Wall Protection
Systems



ISO 9001:2008



Kalite Yönetim Sistemi
TS EN ISO/IEC 17021
AB-006-YS

REFERANSLARIMIZ OUR REFERENCES

YURTIÇİ - DOMESTIC

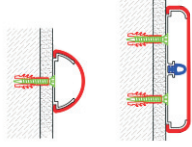
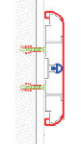

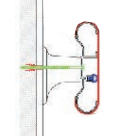
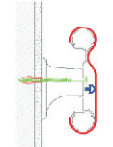
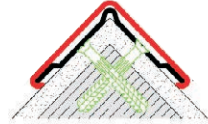
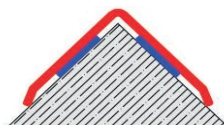
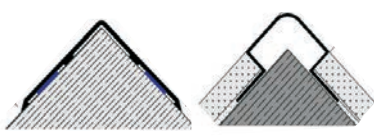
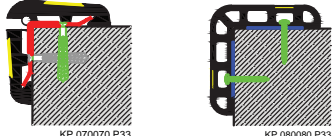
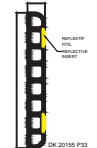
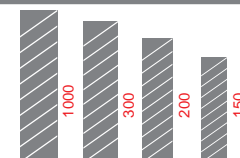
KOMŞU FIRIN
İSVİÇRE HASTANESİ
DİKİLİ DEVLET HASTANESİ
VAKIF GUREBA HASTANESİ
THE MARMARA OTELİ YEMEKHANE
AKBATI AVM
BLUE MOON RESORT HOTEL
MCDONALD'S ŞUBELERİ
FRANSIZ FAKİRHANESİ
BEYKOZ BELEDİYESİ
KFC ANKARA GORDİON
BEZMİ ALEM ÜNİVERSİTESİ
ANTALYA ÖZDİLEK AVM
BOZÜYÜK DEVLET HASTANESİ
TUZLA KOLİN OTEL
WYNDHAM İST.KALAMIŞ MARİNA OTEL

YURTDIŞI - OVERSEAS

AZERBAIJAN WHITE CITY PROJECT
EGYPT MINISTRY OF TRANSPORT RAILWAY HOSPITAL
EGYPT EL-ARABY MEDICAL CENTER IN MENOUFIA
K.S.A. AL SHIFA HOSPITAL – UNIZA CITY
K.S.A. TABUK HOSPITAL
K.S.A. UNAIZA HOSPITAL
LIBYA ALFERDAUS HOSPITAL PROJECT
LIBYA KADRAH HOSPITAL
PAKHISTAN ISLAMABAD HOSPITAL
RUSSIA MOSCOW HOSPITAL
RUSSIA MOSCOW ONCOLOGICAL INSTITUTE
TANZANIA VIVA TOWER PROJECT

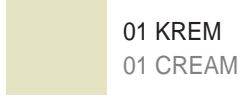


İÇİNDEKİLER CONTENTS

	Asband Duvar Koruma Profilleri Asband Wall Guards DK 19100 DK 25050	Sayfa 5 Page 5
	Asband Duvar Koruma Profilleri Asband Wall Guards DK 25152	Sayfa 6 Page 6
	Asband Duvar Koruma Profilleri Asband Wall Guards DK 29200	Sayfa 7 Page 7
	Asband Tutunma Bantları Asband Handrails TB 37140	Sayfa 9 Page 9
	Asband Tutunma Bantları Asband Handrails TB 39152	Sayfa 10 Page 10
	Asband Köşe Koruma Profilleri Asband Corner Guards KP 5151 KP 7676	Sayfa 11 Page 11
	Asband Köşe Koruma Profilleri Asband Corner Guards KP 3535 KP 5050	Sayfa 12 Page 12
	Asband Alüminyum ve Paslanmaz Çelik Köşe Koruma Profilleri Asband Aluminium and Stainless Steel Corner Guards BKP 3012 A01 BKP 2010 SS01 BKP 5050 A01/SS01 BKP 3030 SS01 BKP 2727 A01 BKP 2525 A01	Sayfa 12 Page 12
	Asband Otopark Köşe Koruma Profili Asband Car-Parking Corner Guards KP 0700 P33 KP 8080 P33 KP 9090 P33 KP 100100 P33	Sayfa 13 Page 13
	Otopark Duvar Koruma Profili Parking Wall Guard DK 020155 P33	Sayfa 13 Page 13
	PVC Duvar Koruma Plakaları PVC Wall Guard Plate DKP 150 DKP 200 DKP 300 DKP 1000	Sayfa 14 Page 14

RENK SEÇENEKLERİ COLOR OPTIONS

ANA RENKLER MAIN COLORS



01 KREM
01 CREAM



02 GRİ
02 GREY



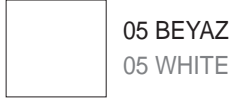
03 KAHVE
03 BROWN



04 YEŞİL
04 GREEN

Ana renkler stok renklerimizdir.
Primary colors are available directly from stock.

KONTUR RENKLER CONTOUR COLORS



05 BEYAZ
05 WHITE



06 AÇIK MAVİ
06 LIGHT BLUE



07 SAKS MAVİ
07 PARLAMENT BLUE



08 LİLA
08 PURPLE

Kontur renklerde stok ve üretim için lütfen bilgi isteyiniz.
Please contact us for production of contour colors.



09 KOYU YEŞİL
09 DARK GREEN



10 CEVİZ
10 WALNUT



11 BORDO
11 BORDEAUX



12 YAVRUAĞZI
12 SOMON



13 TURKUAZ
13 TURQUOISE



14 KOYU MAVİ
14 DARK BLUE



15 KESE KAĞIDI
15 PAPER BAG



16 TURUNCU
16 ORANGE



17 AÇIK YEŞİL
17 LIGHT GREEN



18 FÜME
18 SMOKED



19 KIRMIZI
19 RED



20 KOYU KREM
20 DARK CREAM

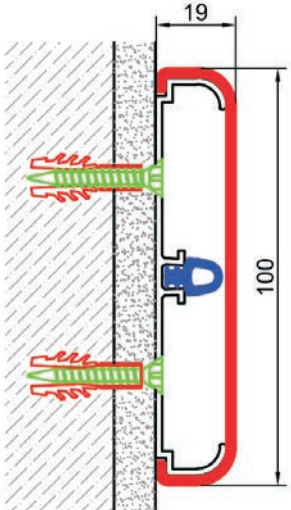
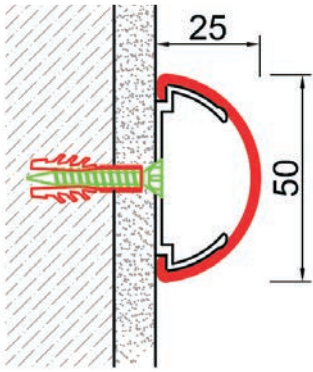
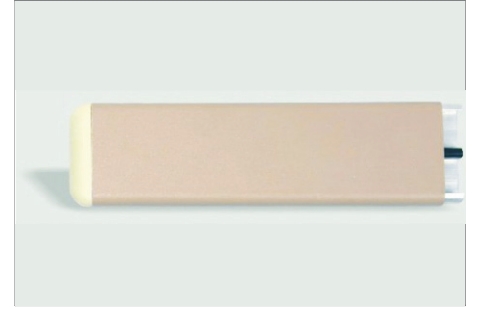
Renkler orijinaline en yakın olarak yansıtılmaya çalışılmıştır. Doğru renk seçimi için kartela isteyiniz.
The color palette shows digital painting. Please ask samples to receive exact colors.



Asteknik yer alan bütün ürün sayfaları, bilgileri, görsel unsurları önceden bildirimde bulunmadan değiştirme hakkını saklı tutar.
Asteknik reserves the right to change the information given herein without prior notice.

ASBAND DUVAR KORUMA PROFİLLERİ ASBAND WALL GUARDS

DK 19100 - DK 25050



Alüminyum gövde ve gövde üzerine takılan, çizilmez ve antibakteriyel PVC kaplamadan oluşan profillerdir.

Dış köşe dönüş parçaları ve bitim uçları, sistemi tamamlayan parçalardır.

Alüminyum gövde duvara 50 cm aralıkla, vida yardımıyla monte edilir; daha sonra PVC kaplama gövde üzerine takılarak montaj tamamlanır. Standart boy 3 mt dir.

Wall Guards prevent the damages and help to reduce maintenance and repair costs of the Facilities.

They are widely used in hospitals to prevent the damages occurred by the crashing of stretchers and wheel chairs. Also ideal for hotels, restaurants, schools and offices where the wall surfaces may be damaged due to the moveable furniture.

Scratch-proof PVC cover placed on the continuous aluminum retainer is tested as ; antibacterial, antifungal, fire resistant and impact resistant.

Standard production length is 3 meters.

Malzeme / Material	Kod No / Code Number	Yükseklik / Height
Alüminyum Gövde PVC Kaplama + Fıtil Aluminium Retainer + PVC Cover	DK 25050	50 mm
Sağ Sol Bitiş Right - Left End Caps	DK 25050 BU	
Alüminyum Gövde PVC Kaplama + Fıtil Aluminium Retainer + PVC Cover	DK 19100	100 mm
Sağ Sol Bitiş Right - Left End Caps	DK 19100 BU	

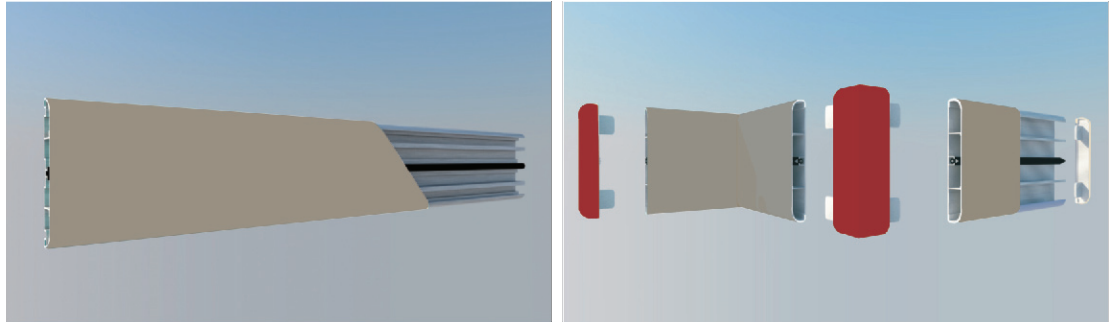
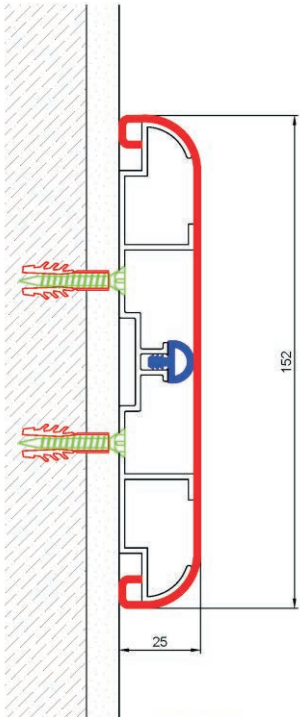
AKSESUARLAR ACCESSORIES



Sağ Sol Bitiş
Right - Left End Caps

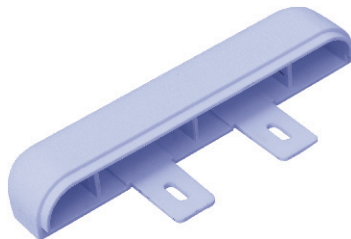
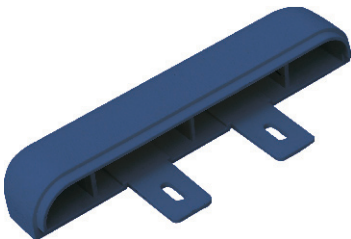
ASBAND DUVAR KORUMA PROFİLLERİ ASBAND WALL GUARDS

DK 25152

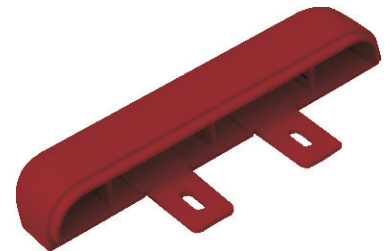


Malzeme / Material	Kod No / Code Number	Yükseklik / Height
Alüminyum Gövde PVC Kaplama + Fitil Aluminium Retainer + PVC Cover	DK 25152	152 mm
Sağ Sol Bitiş - Dış Dönüş Right - Left End Caps-Outside Corner	DK 25152 BU / DK	

AKSESUARLAR ACCESSORIES

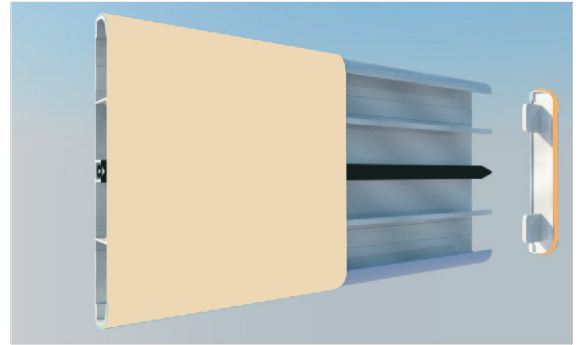
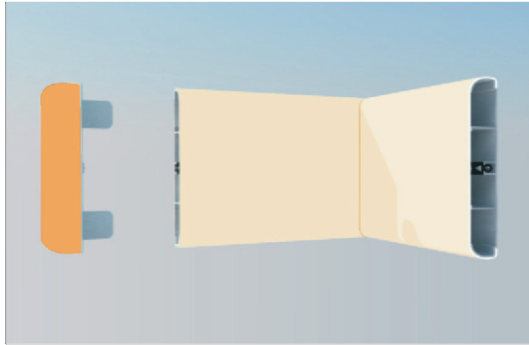
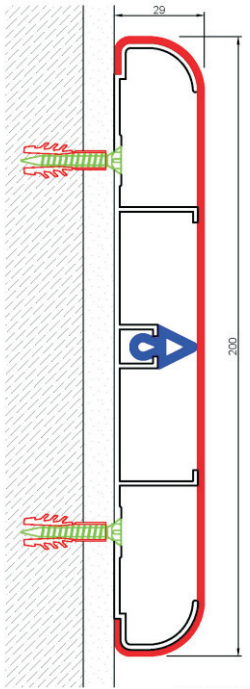


Sağ Sol Bitiş
Right - Left End Caps



ASBAND DUVAR KORUMA PROFİLLERİ ASBAND WALL GUARDS

DK 29200



Malzeme / Material	Kod No / Code Number	Yükseklik / Height
Alüminyum Gövde PVC Kaplama + Fıtıl Aluminium Retainer + PVC Cover	DK 29200	200 mm
Sağ Sol Bitiş Right - Left End Caps	DK 29200 BU	

AKSESUARLAR ACCESSORIES



Sağ Sol Bitiş
Right - Left End Caps

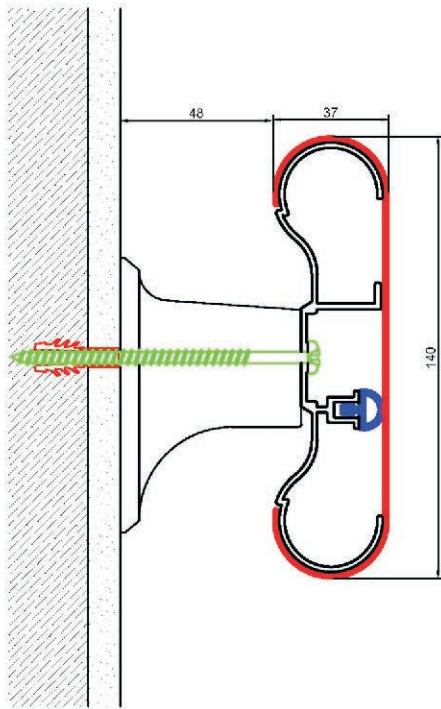
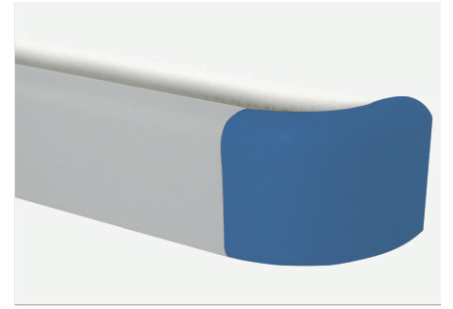
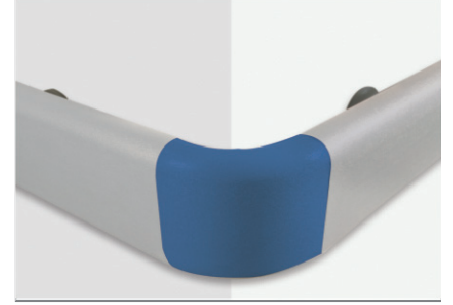
Hastane Örnek Uygulamaları

Applications For Hospitals



ASBAND TUTUNMA BANTLARI ASBAND HANDRAILS

TB 37140



Alüminyum gövde ve gövde üzerine takılan, çizilmez ve antibakteriyel PVC kaplamadan oluşan profillerdir. İç-dış köşe dönüş parçaları ve bitim uçları, sistemi tamamlayan parçalardır. Duvara montajı, 50 cm aralıkla yerleştirilen konsol bağlantı elemanları yardımı ile yapılır. Standart boy 3 mt dir

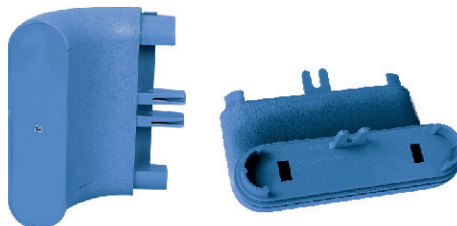
Handrails are mainly used at hospitals, rest homes etc. and help especially old and suffering people walking in an easier way as well as protecting the walls. PVC cover on continuous aluminum retainer fastened to the wall with a special bracket system placed in every 50 cm. Inside & outside corners provide a continuous application at cornered structures. Profiles are tested as ; antibacterial, antifungal, fire resistant and impact resistant. Standard production length is 3 meters.

Malzeme / Material	Kod No / Code Number	Yükseklik / Height
Alüminyum Gövde PVC Kaplama + Fıtil Aluminium retainer + PVC Cover	TB 37140	140 mm
Konsol / Bracket		
Sağ Sol Bitiş ve İç Dış Dönüş Parçaları Right - Left End Caps Inside-Outside Corner	TB 37140 BU / IK / DK	

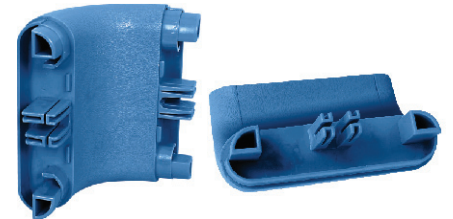
AKSESUARLAR ACCESSORIES



Konsol
Bracket



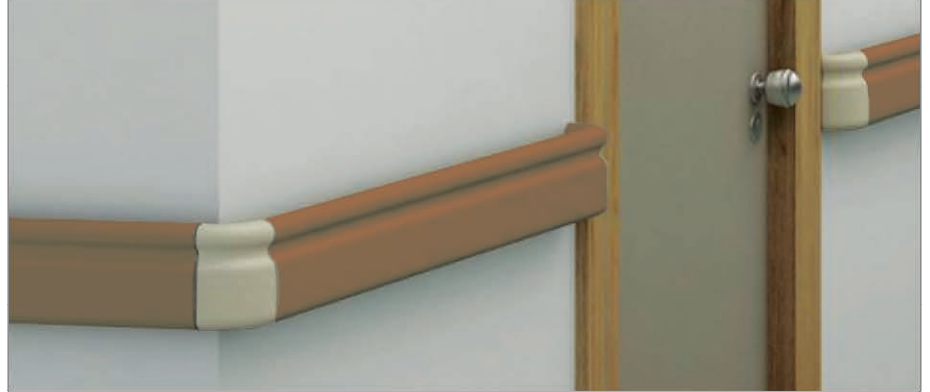
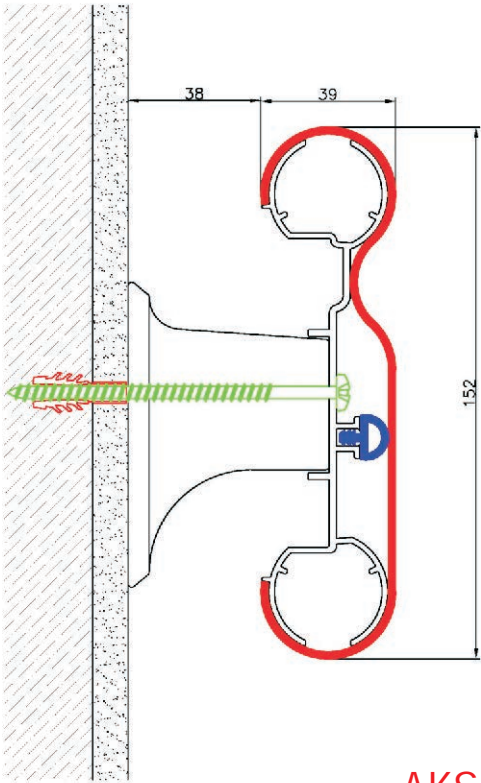
Sağ Sol Bitiş
Right - Left End Caps



İç Dış Köşe Dönüş
Inside - Outside Corner

ASBAND TUTUNMA BANTLARI ASBAND HANDRAILS

TB 39152



Malzeme / Material	Kod No / Code Number	Yükseklik / Height
Alüminyum Gövde PVC Kaplama + Fıtil Aluminium Retainer + PVC Cover	TB 39152	152 mm
Konsol / Bracket	TB 39152 BU / IK / DK	
Sağ Sol Bitiş ve İç Dış Dönüş Parçaları Right - Left End Caps Inside-Outside Corner		

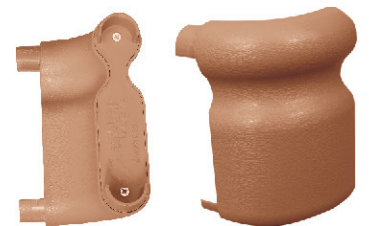
AKSESUARLAR ACCESSORIES



Konsol
Bracket



Sağ Sol Bitiş
Right - Left End Caps



İç Dış Köşe Dönüş
Inside - Outside Corner

ASBAND KÖŞE KORUMA PROFİLLERİ ASBAND CORNER GUARDS

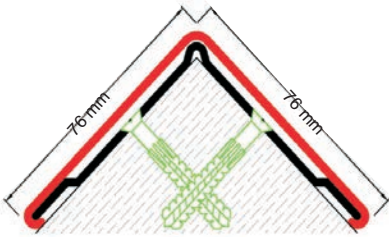
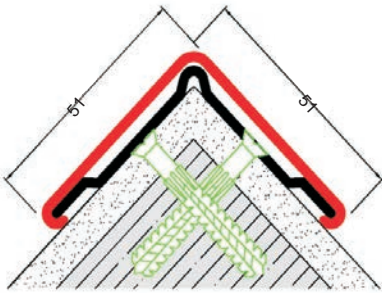
KP 5151
KP 7676



Alüminyum gövde ve gövde üzerine takılan, çizilmez PVC kaplamadan oluşan profillerdir. Alt ve üst bitişler için bitim uçları bulunur. Alüminyum gövde, duvara vidalar yardımı ile monte edilir, daha sonra PVC kaplama gövde üzerine takılır. Standart boy 3 mt dir.

Corner Guard Systems are mainly used in hospitals, airports, shopping centers and in all other places where the wall corners have damage risk due to the crashing of different carriers. Also ideal for schools and kindergartens to minimize the accident risk. Eliminates the corner damage risk and make a big contribution to the Facilities at lowering repair costs.

It gives a decorative aspect to the places, especially applied with contrasting color end caps. Continuous aluminum retainer reinforces PVC cover and ensures the profile to be installed in a perfect way. Profile is tested and reported as; antibacterial, antifungal, fire resistant and impact resistant. Standard production length is 3 meters.



Malzeme / Material	Kod No / Code Number	Kanat Geniřliđi / Span
Alüminyum Gövde PVC Kaplama Aluminium Retainer + PVC Cover	KP 5151	51 x 51 mm
Sađ Bitiř Uçları Right-End Caps Sol Bitiř Uçları Left-End Caps	KP 5151 BU	
Alüminyum Gövde PVC Kaplama Aluminium Retainer + PVC Cover	KP 7676	76 x 76 mm
Sađ Sol Bitiř Uçları Right - Left End Caps	KP 7676 BU	

AKSESUARLAR ACCESSORIES

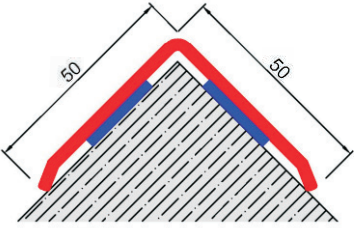
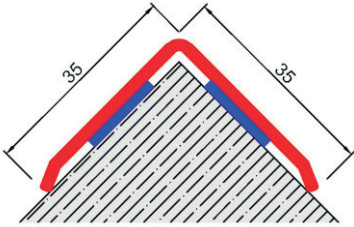
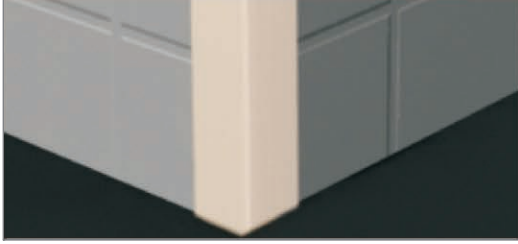
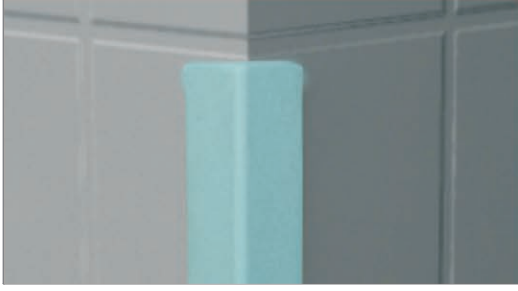


Sađ Sol Bitiř Uçları
Right - Left End Caps



ASBAND KÖŞE KORUMA PROFİLLERİ ASBAND CORNER GUARDS

KP 3535
KP 5050

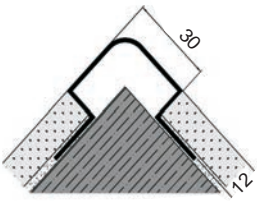


Çizilmaz PVC' den mamul tek parça profillerdir. Duvara çift taraflı yapışkan bantlar veya özel PVC yapıştırıcısı ile tespit edilirler. Standart boy 3 mt. dir.

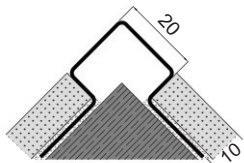
Durable and scratch-proof PVC profiles composed as a single piece, mounted on a wall via double sided self-adhesive tapes or special PVC glue. The standard length of profiles is 3 mt.

Malzeme / Material	Kod No / Code Number	Kanat Genişliği / Span
PVC Gövde Köşe Koruma Profili PVC Corner Guard	KP 3535 KP 5050	35 x 35 mm 50 x 50 mm

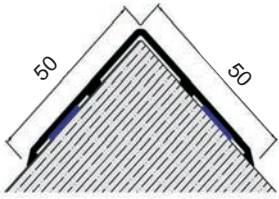
ASBAND ALÜMİNYUM VE PASLANMAZ ÇELİK KÖŞE KORUMA PROFİLLERİ ASBAND ALUMINIUM AND STAINLESS STEEL CORNER GUARDS



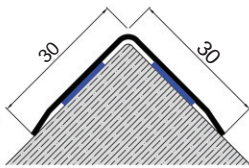
BKP 3012 A01



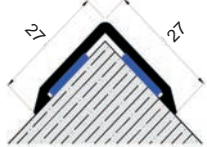
BKP 2010 SS01



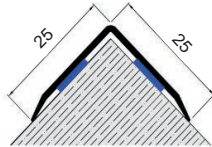
BKP 5050 A01 /SS 01



BKP 3030 SS01



BKP 2727 A01



BKP 2525 A01

Eloksalli alüminyum ve paslanmaz çelikten mamul tek parça profillerdir. Duvara çift taraflı yapışkan bant, silikon veya vida yardımıyla tespit edilirler. Standart boy 3 mt. dir. Seramik altı köşe profilleri ise seramik yapıştırıcısı ile duvara yapıştırılır.

Composed as a single piece, made from anodized aluminum and stainless-steel, mounted on a wall via double sided self-adhesive tapes, silicone or screws, The standard length of profiles is 3 mt.

Under floor ceramic corner profiles are mounted on a wall via special ceramic glue.

Malzeme / Material	Kod No / Code Number	Kanat Genişliği / Span
Alüminyum/Paslanmaz Köşe Koruma Profili Aluminium/Stainless Steel Corner Guard	BKP 3012 A01	30 x 12 mm
	BKP 2010 SS01	20 x 10 mm
	BKP 5050 A01/SS01	50 x 50 mm
	BKP 3030 SS01	30 x 30 mm
	BKP 2727 A01	27 x 27 mm
	BKP 2525 A01	25 x 25 mm

ASBAND OTOPARK KÖŞE KORUMA PROFİLLERİ ASBAND CAR - PARKING CORNER GUARDS

KP 7070 P33
DK 020155 P33

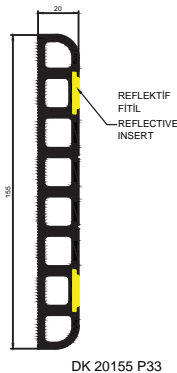


Araç çarpmalarına karşı, duvar ve kolon köşelerini korumak için kullanılan profillerdir. Galvaniz çelik gövde ve gövde üzerine takılan EPDM kauçuk profillerden meydana gelen çift parçalı modeller yanında, tamamı EPDM kauçuktan üretilen tek parça profiller de bulunmaktadır. Profillerin her iki kenarında reflektif bantlar bulunur.

Profiles those are used in parking lots to protect corners of walls and colons against impact from car crashes. As well as composed of two parts, based on a galvanized steel structure, covered with EPDM rubber, there are also single piece profiles, totally composed from EPDM Rubber. Both sides of profiles are covered with reflective tapes.

Malzeme / Material	Kod No / Code Number	Kanat Genişliği / Span
Otopark Köşe Koruma Profili Car-Parking Corner Guards	KP 7070 P33	70 x 70 mm
	KP 8080 P33	80 x 80 mm
	KP 9090 P33	90 x 90 mm
	KP 100100 P33	100 x 100 mm

OTOPARK DUVAR KORUMA PROFİLİ CAR - PARKING WALL GUARDS



DK 020155 P33

Araç çarpmalarına karşı, duvar yüzeylerini korumak için kullanılan profillerdir. EPDM kauçuktan üretilmiştir. Üzerinde 2 sıra reflektif bantlar bulunur

Profiles those are used in parking lots to protect surfaces of walls against impact from car crashes, covered with EPDM rubber and 2 lines reflective tapes.

Malzeme / Material	Kod No / Code Number	Genişlik / Width
Otopark Duvar Koruma Profili Car-Parking Wall Guards	DK 020155 P33	155 mm

ASBAND DUVAR KORUMA PLAKALARI ASBAND WALL GUARD PLATES

DKP 150 - DKP 200
DKP 300 - DKP 1000



Hastane ve alışveriş merkezlerinde duvar ve kapı yüzeylerini sedye, el arabası gibi araçların çarpmasına karşı korumak için kullanılan PVC plakalardır. Çizilmez, darbelere karşı dayanıklıdır. Kolay silinebilir ve antibakteriyel olduğu için spor salonlarında ve hastane koridorlarında tercih edilir. Plakalar özel PVC yapıştırıcısı ile duvara yapıştırılır.

PVC plates are used to protect wall and door surface against impact from gurneys and trolleys in hospitals and shopping malls.

They are scratch-proof and durable to impacts. Wall Guard Plates can be cleaned and are ideal to be used in sport halls and in hospital corridors because of the anti-bacterial properties. Wall Guard Plates are installed on the wall using special PVC glue.

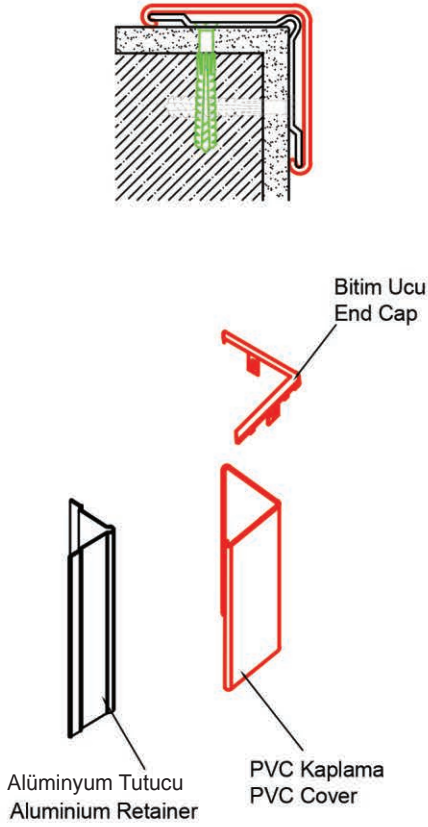
Malzeme / Material	Kod No / Code Number	Genişlik / Width
PVC Duvar Koruma Plakaları PVC Wall Guard Plate	DKP 150	150 mm
	DKP 200	200 mm
	DKP 300	300 mm
	DKP 1000	1 mt

Metraja göre özel boy üretebilir.

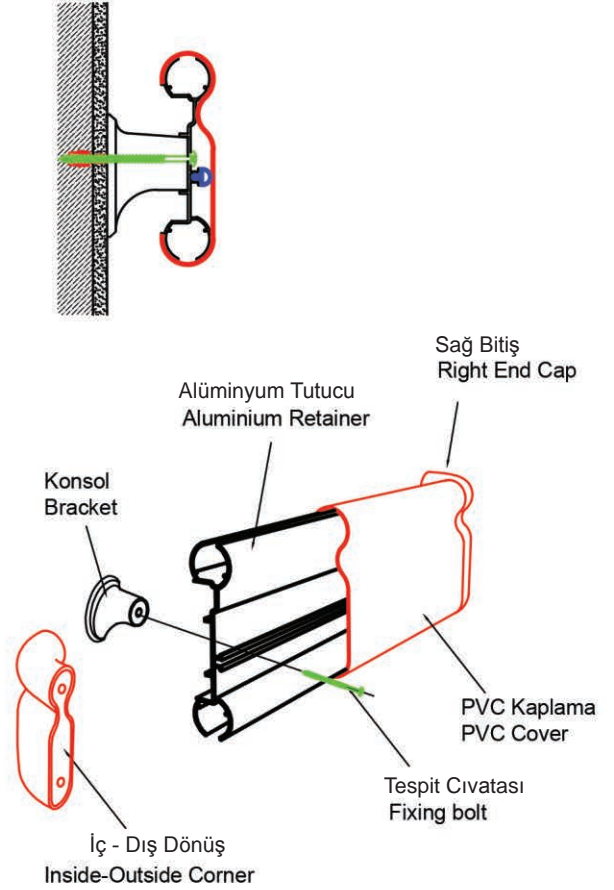
Special dimensions are subject to manufacture according to the quantity of order.

ASBAND MONTAJ ŞEMALARI ASBAND INSTALLATION CHART

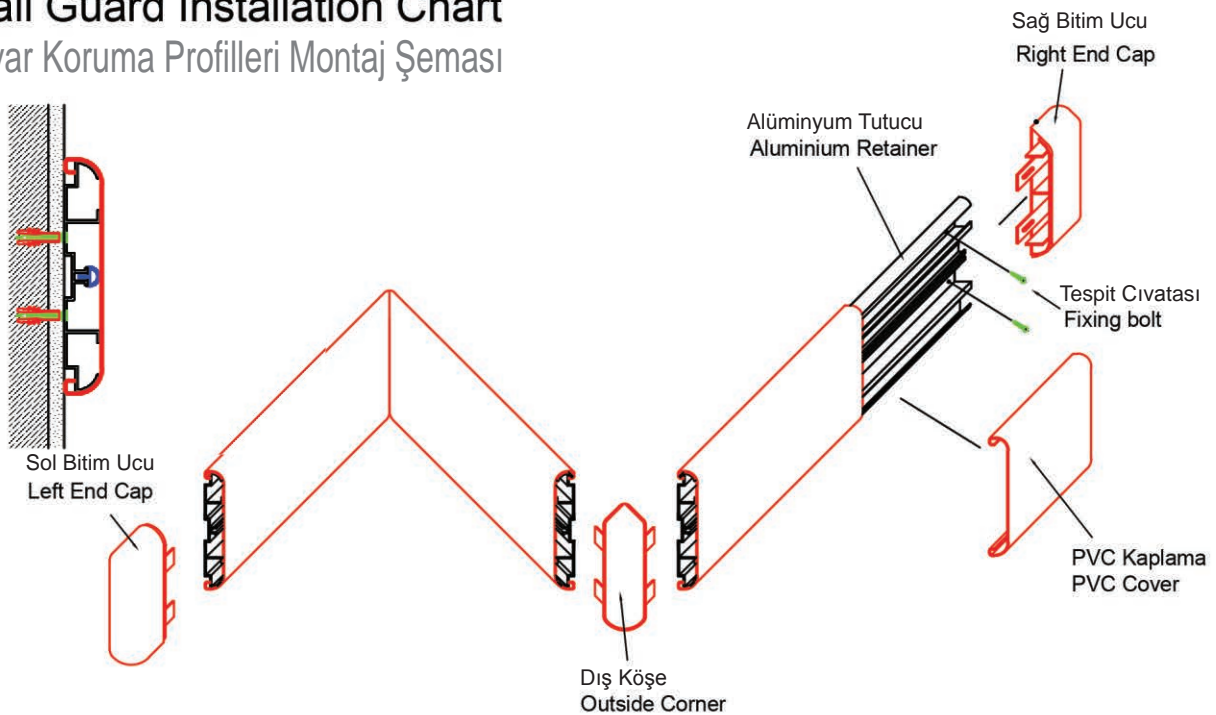
Corner Guard Installation Chart Köşe Koruma Profilleri Montaj Şeması



Handrail Installation Chart Tutunma Bantları Montaj Şeması



Wall Guard Installation Chart Duvar Koruma Profilleri Montaj Şeması





Asteknik Mühendislik Ltd. Şti.

MERKEZ / HEAD OFFICE

1. Esişehir Mah. Şair Fuzuli Sk. No: 10 34776 Y. Dudullu-Ümraniye / İSTANBUL

Tel.: +90 216 466 72 63 (Pbx) Fax: +90 216 466 72 64

E-Mail: info@asteknik.com

ŞUBE / BRANCH OFFICE

1. Demirciler Sitesi 3. Cadde No: 37 34015 Zeytinburnu / İSTANBUL

Tel.: +90 212 416 83 53 (Pbx) Fax: +90 212 416 83 56

E-Mail: ozer@asteknik.com

İZMİR ŞUBE / İZMİR BRANCH OFFICE

Tel.: +90 533 721 73 93

E-Mail: fduru@asteknik.com

www.asteknik.com



ISO 9001:2008



Kalite Yönetim Sistemi
TS EN ISO 9001:2008
AB-0006-YS